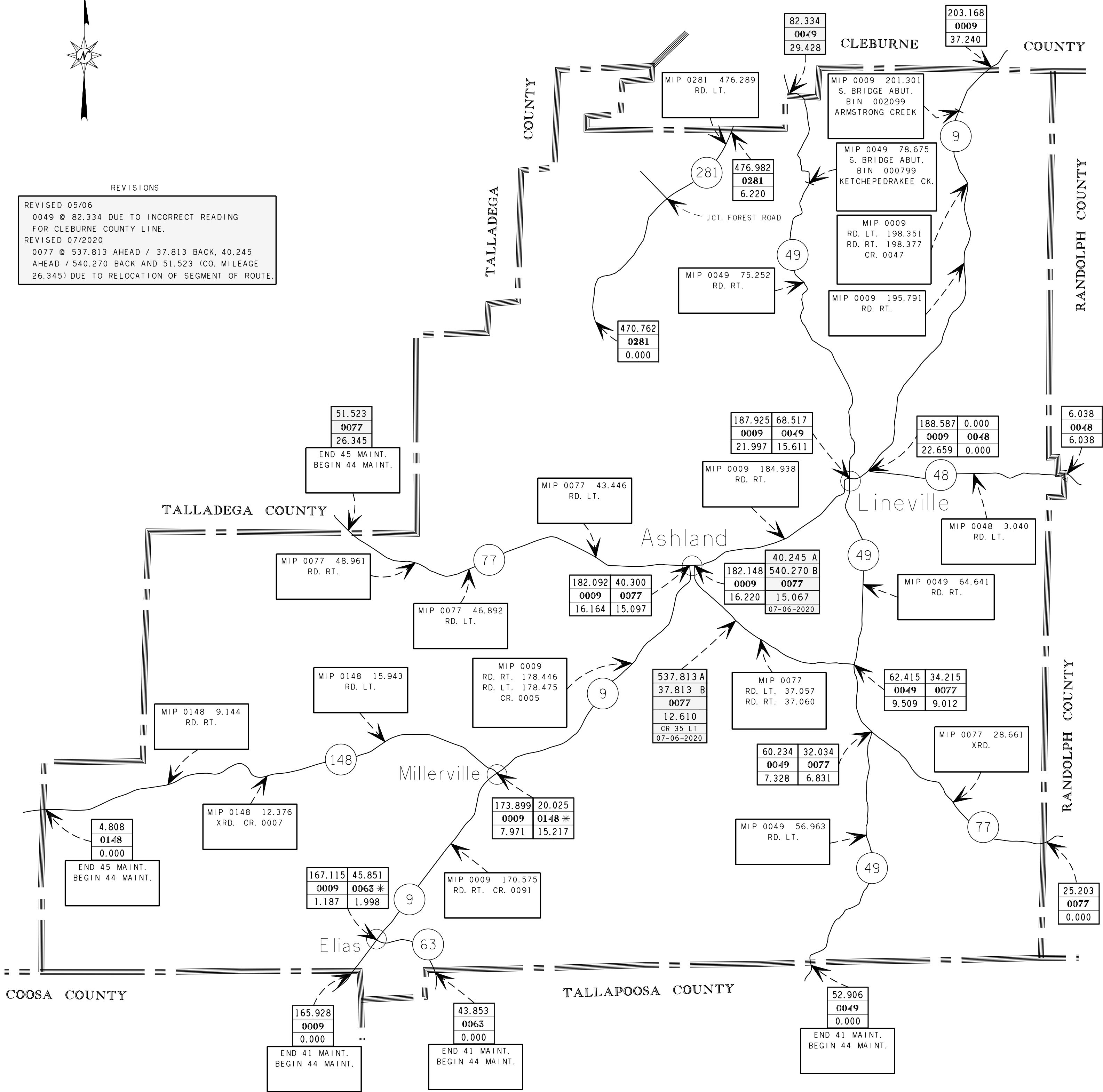




REVISIONS

REVISED 05/06  
 0049 @ 82.334 DUE TO INCORRECT READING FOR CLEBURNE COUNTY LINE.  
 REVISED 07/2020  
 0077 @ 537.813 AHEAD / 37.813 BACK, 40.245 AHEAD / 540.270 BACK AND 51.523 (CO. MILEAGE 26.345) DUE TO RELOCATION OF SEGMENT OF ROUTE.



LEGEND

HIGHWAY MARKERS

INTERSTATE (65) UNITED STATES (31) STATE (1)

MILEPOST DISTANCE ..... 26.530  
 ROUTE NUMBER ..... 0010  
 INVENTORY MILEAGE DISTANCE ..... 26.450

MILEPOST DISTANCE (AHEAD) ..... 37.690 A  
 MILEPOST DISTANCE (BEHIND) ..... 29.530 B  
 ROUTE NUMBER ..... 0016  
 INVENTORY MILEAGE DISTANCE ..... 29.440  
 MILEPOST REVISION DATE ..... 12-01-94  
 END OF ROUTE ..... \*

MILEAGE IDENTIFICATION POINT (MIP)

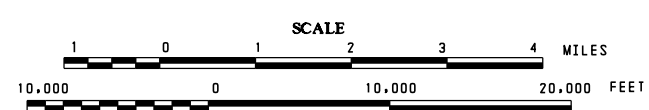
ROUTE NUMBER / DISTANCE ..... MIP 0053 153.955  
 DESCRIPTION ..... RD. RT. CR. 0101  
 LATITUDE ..... [FUTURE] ..... N32° 26' 14"  
 LONGITUDE ..... [FUTURE] ..... W86° 35' 34"

END REGION / AREA / DISTRICT MAINTENANCE -- END 81 MAINT.  
 BEGIN REGION / AREA / DISTRICT MAINTENANCE-- BEGIN 53 MAINT.  
 LATITUDE ..... [FUTURE] ..... N32° 26' 14"  
 LONGITUDE ..... [FUTURE] ..... W86° 35' 34"

MILEPOST MAP  
**CLAY COUNTY**  
**ALABAMA**

PREPARED BY THE  
**ALABAMA DEPARTMENT OF TRANSPORTATION**  
 BUREAU OF TRANSPORTATION PLANNING  
 SURVEYING AND MAPPING DIVISION

IN COOPERATION WITH THE  
**U.S. DEPARTMENT OF TRANSPORTATION**  
 FEDERAL HIGHWAY ADMINISTRATION



AUGUST 1999

PARTIAL REVISION MAY 2006 AND JULY 2020

(See Revision Block)

