

REVISIONS

REVISED 09/03
ROUTE PREVIOUSLY SHOWN AS 0108 (0.000, 0.570, 0.866, 0.970) IN DOWNTOWN BIRMINGHAM. ROUTE DELETED FROM MAP DUE TO NO DOCUMENTATION OF OFFICIAL DESIGNATION.

REVISED 03/05
0004 @ 92.120, 95.302, 96.801, 97.266, 97.661, 97.836, 97.931, 99.081 AND 99.436.
0004W @ 97.476, 97.981, 98.126, 98.216, 99.226, 99.581, 99.761 DUE TO ROUTING OF 0004 AND 0004W.
0007 @ 134.621, 134.796, 134.897, 136.037 AND 136.209 CORRECTIONS ON 0004 AND 0004W DUE TO ROUTING.
0007S @ 134.540, 134.809, 134.937 AND 135.027 DUE TO ROUTING OF 4W AND CORRECTION ON END ROUTE SYMBOL AND W TO S.

REVISED 05/05
0003 @ JCT. 0004 (CORRIDOR X) PROJECTED KNOWN INTERSECTING POINT.
POINT WAS DELETED DUE TO UNOBTAINABLE

REVISED 06/05
0004 @ 94.947, 96.446, 96.911, 97.306, 97.351, 97.481, 97.576, 98.726, 99.081 AND 99.336 DUE TO INCORRECT ROUTING ON ONE WAY STREET AT JUNCTION OF 0004W.
0004W @ 97.106, 97.611, 97.756, 97.846, 98.856, 99.211, 99.404 AND 100.306 DUE TO INCORRECT ROUTING OF 0004 ON ONE WAY STREET AND INCORRECT END OF ROUTE LOCATOR AT JUNCTION OF 0004.
0007S @ 134.540 AND 135.027 DUE TO INCORRECT END OF ROUTE LOCATOR.

REVISED 09/07
0004 @ 80.235 (WALKER CO. LINE) DUE TO PRIOR ESTIMATED READING BEING INCORRECT AND 85.235 DUE TO SEGMENT COMPLETION.
0005 @ 146.611 DUE TO COMPLETION OF SEGMENT OF 0004.

REVISED 04/08
0004 @ 87.260 AND 91.747 DUE TO IDENTIFICATION OF ADDITIONAL REFERENCE POINTS.

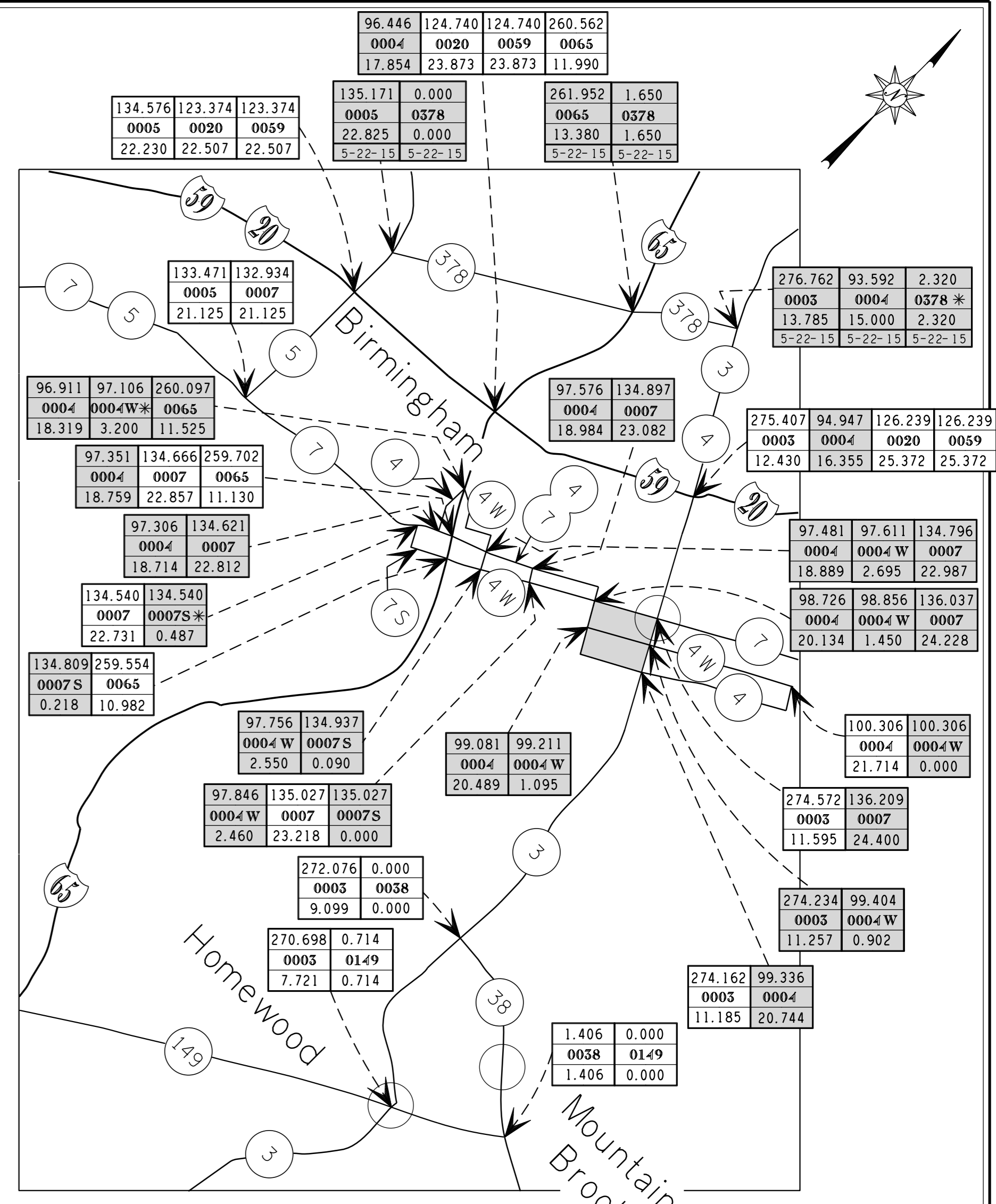
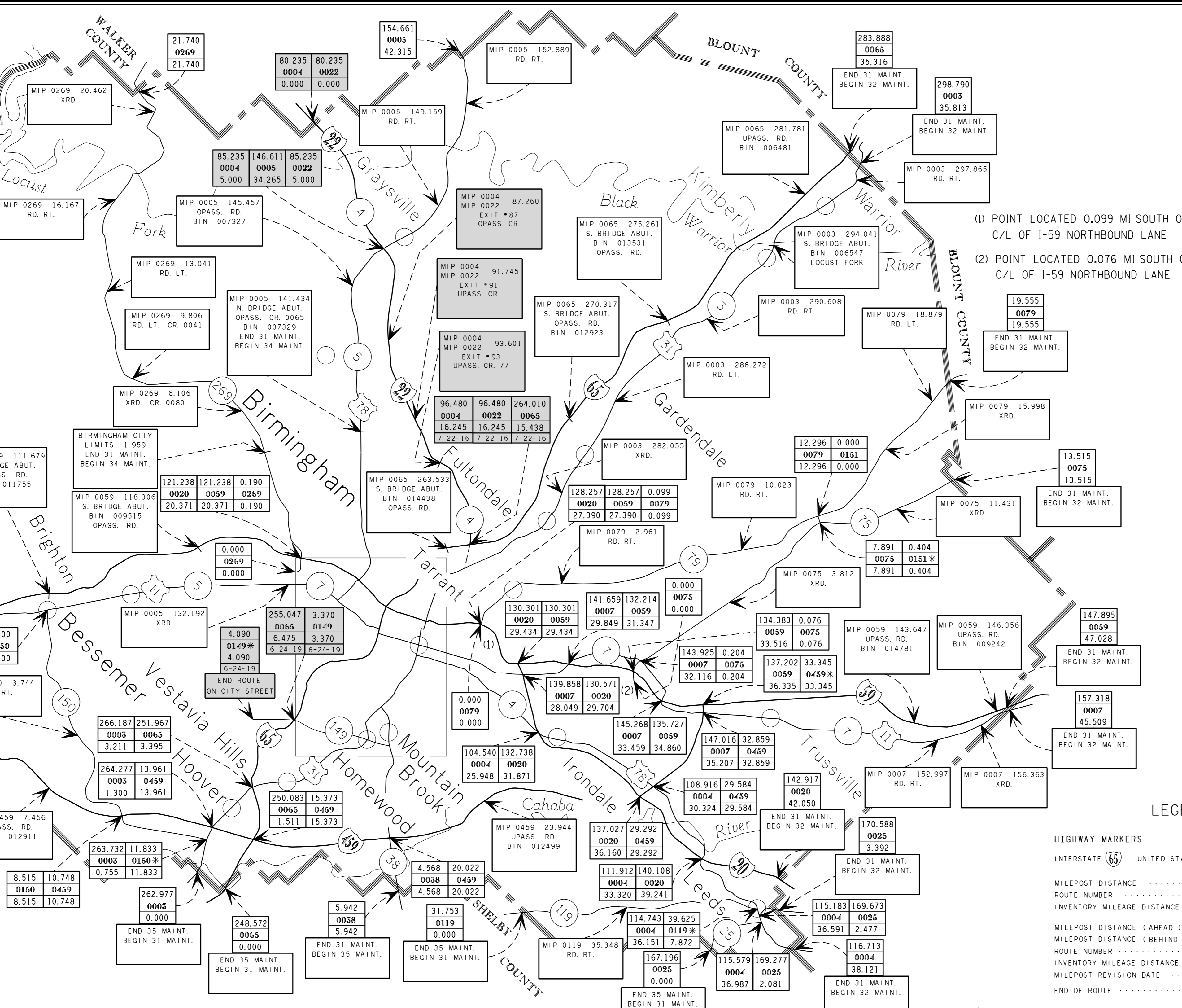
REVISIONS

REVISED 12/12
0022 @ 80.235, 85.235, 87.260, 91.745 AND 93.601 DUE TO DESIGNATION OF INTERSTATE 22 ON THE COMPLETED SEGMENT FROM THE MISSISSIPPI LINE TO COALBURG ROAD.

REVISED 05/15
0149 @ 4.415 DUE TO ELIMINATION OF SEGMENT. CHANGE TO END OF ROUTE.
0378 @ 0.000, 1.650, AND 2.320 DUE TO ADDITION OF NEW ROUTE.
0005 @ 135.171 DUE TO ADDITION OF 0378.
0065 @ 261.952 DUE TO ADDITION OF 0378.
0004 @ 276.762 DUE TO ADDITION OF 0378.
0004 @ 93.592 DUE TO ADDITION OF 0378.

REVISED 07/16
0004 @ 96.480 DUE TO COMPLETION OF SEGMENT OF ROUTE.
0022 @ 96.480 DUE TO COMPLETION OF SEGMENT OF ROUTE.
0065 @ 264.010 DUE TO COMPLETION OF SEGMENT OF 0004 / 0022.

REVISED 06/19
INTERSTATE 65 @ 255.047 (COUNTY MILEAGE 6.475) AND STATE ROUTE 149 @ 3.370 (COUNTY MILEAGE 3.370) AND 4.090 (COUNTY MILEAGE 4.090) DUE TO ELIMINATION OF SEGMENT OF STATE ROUTE 149 AND ADDITION / RELOCATION OF SEGMENT OF 149 ON THE STATE SYSTEM. MAINTENANCE ASSUMED BY CITY OF HOMEWOOD.



MILEPOST MAP
JEFFERSON COUNTY
ALABAMA

PREPARED BY THE
ALABAMA DEPARTMENT OF TRANSPORTATION
BUREAU OF TRANSPORTATION PLANNING
SURVEYING AND MAPPING DIVISION
IN COOPERATION WITH THE
U.S. DEPARTMENT OF TRANSPORTATION
FEDERAL HIGHWAY ADMINISTRATION

AUGUST 1999
PARTIAL REVISION SEPTEMBER 2003, MARCH 2005, MAY 2005, JUNE 2005,
SEPTEMBER 2007, APRIL 2008, DECEMBER 2012, MAY 2015, JULY 2016 AND JUNE 2019
(See Revision Blocks)

LEGEND

HIGHWAY MARKERS
INTERSTATE (65) UNITED STATES (31) STATE (1)

MILEPOST DISTANCE 26.530
ROUTE NUMBER 0010
INVENTORY MILEAGE DISTANCE 26.450

MILEPOST DISTANCE (AHEAD) 37.690 A
MILEPOST DISTANCE (BEHIND) 29.530 B
ROUTE NUMBER 0016
INVENTORY MILEAGE DISTANCE 29.440
MILEPOST REVISION DATE 12-01-94
END OF ROUTE *

SCALE
0 10,000 20,000 FEET
0 1 2 3 4 MILES

COUNTY LOCATION

MILEAGE IDENTIFICATION POINT (MIP)

ROUTE NUMBER / DISTANCE
DESCRIPTION
LATITUDE [FUTURE]
LONGITUDE [FUTURE]

END REGION / AREA / DISTRICT MAINTENANCE
BEGIN REGION / AREA / DISTRICT MAINTENANCE
LATITUDE [FUTURE]
LONGITUDE [FUTURE]

MIP 0053 153.955
RD. RT. CR. 0101
N32° 26' 14"
W86° 35' 34"

END 81 MAINT.
BEGIN 53 MAINT.
N32° 26' 14"
W86° 35' 34"

8.515 10.748
0150 0459
8.515 10.748

262.977
0003
0.000

END 35 MAINT.
BEGIN 31 MAINT.

5.942
0038
5.942

END 31 MAINT.
BEGIN 35 MAINT.

31.753
0119
0.000

END 35 MAINT.
BEGIN 31 MAINT.

111.912 140.108
0004 0020
33.320 39.241

115.183 169.673
0004 0025
36.591 2.477

116.713
0004
38.121

END 31 MAINT.
BEGIN 32 MAINT.

167.196
0025
0.000

END 35 MAINT.
BEGIN 31 MAINT.

115.579 169.277
0004 0025
36.987 2.081

END 31 MAINT.
BEGIN 32 MAINT.

170.588
0025
3.392

END 31 MAINT.
BEGIN 32 MAINT.

157.318
0007
45.509

END 31 MAINT.
BEGIN 32 MAINT.

155.183 169.673
0004 0025
36.591 2.477

116.713
0004
38.121

END 31 MAINT.
BEGIN 32 MAINT.

111.912 140.108
0004 0020
33.320 39.241

145.268 135.727
0007 0059
33.459 34.860

147.016 32.859
0007 0459
35.207 32.859

142.917
0020
42.050

END 31 MAINT.
BEGIN 32 MAINT.

170.588
0025
3.392

END 31 MAINT.
BEGIN 32 MAINT.

157.318
0007
45.509

END 31 MAINT.
BEGIN 32 MAINT.

147.895
0059
47.028

END 31 MAINT.
BEGIN 32 MAINT.